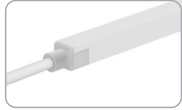
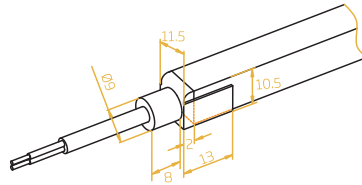


Silicone Injection-moulded Front Connector-End



FXN - 1010 - C - S - IM - FE



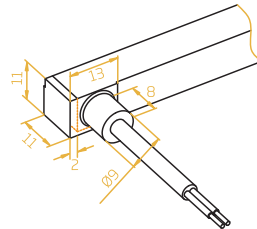
Silicone Injection-moulded Front Connector Side



FXN - 1010 - C - S - IM - FSL



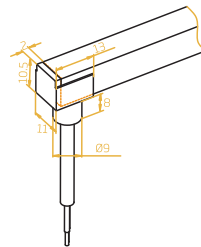
FXN - 1010 - C - S - IM - FSR



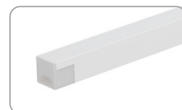
Silicone Injection-moulded Front Connector Bottom



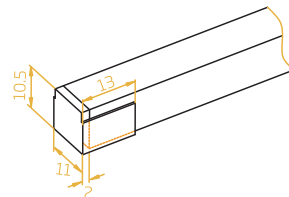
FXN - 1010 - C - S - IM - FB



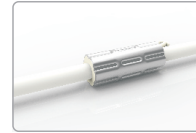
Silicone Injection-moulded End Cap



FXN - 1010 - C - S - IM - EC



Anti-wicking Ferrule

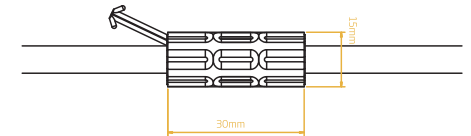


The anti-wicking ferrule is located at 115mm (±10mm tolerance) from the connector on the cable.

For protection against water ingress from inside of cable wire and hence damage the light.

Note:

1. Unless otherwise stated, the tolerance is $\pm 0.5\text{mm}$.
2. The removal of anti-wicking ferrule will void the warranty if any water ingress caused by it.



Male & Female Connector



For plug and play cable junction, IP67.

FXN - 1010 - MC / FXN - 1010 - FC

Note:

Unless otherwise stated, the tolerance is $\pm 2\text{mm}$.

